

Instructions for Limited Opening 5-WAY® Binding Posts

Single and Double Assembly, Standard and Miniature, Larger Stud and Custom Color Ring Types

Limited opening binding posts are designed to help prevent accidental contact with electrically energized surfaces. A captive thumbnut with a positive stop allows adequate room for making connections while reducing the likelihood of the user accidentally contacting current carrying parts. Available in red, white, blue, yellow, black and green. BP31 Fluted Nut Types have insulating parts of Lexan® polycarbonate resin which has a higher DC insulation resistance at all operating temperatures and significantly lower capacitance which provides greater resistance to high frequency leakage effects. All other Types have nylon plastic per MIL-P20693A, Type IV. Current carrying parts are gold, nickel or tin plated brass for improved conductivity and corrosion resistance. With the exception of All Metal Grounding Type BP30GP10, all metal parts are recessed for user and instrument protection and do not touch the mounting panel. The All Metal Grounding Type BP30GP10 is made of polished nickel plated brass.

*Lexan is a General Electric Trademark.

Double Assembly Types are designed for faster, more accurate mounting on 3/4-inch (19mm) centers. Standard, Miniature and Larger Stud Size Types have panel insulating parts in black only. Thumbnuts are available in color combinations of red and black, black and black and red and red. Plastic insulating parts have the same characteristics as single assembly types.

Custom Color Ring Types have neutral gray plastic insulating parts. Single Assembly Types have thumbnut-embedded rings in red, white, blue, yellow, black or green plastic while Double Assembly Types have thumbnut color rings in black-red only. All Limited Opening 5-WAY® Binding Posts, Single and Double Assembly Types, are recognized under the component program of Underwriters Laboratories per UL61010-1 Electrical Equipment for Measurement, Control and Laboratory use.



Limited opening binding posts are also designed to meet:

- International Electrotechnical Commission safety publication 348.P, "Safety Requirements for Electronic Measuring and Controlling Instrumentation".
- American National Standards Institute, Inc. publication ANSI C39.5-1974, "Safety Requirements for Electronic Measuring and Controlling Instrumentation".

Standard and Larger Stud Size, Single Assembly, BP30 and BP30-10 Series Hex Nut; and BP31 and BP31-10 Series Fluted Nut (including Custom Color Ring) Types.

Supplied with captive thumbnut and fixed front panel button assembled to the stud. The loose back-of-panel insulator is supplied separately. See Figure 1 for mounting hole dimensions (keyed hole required for positive orientation).

To mount, insert the stud in the hole, orient as required and assemble the back-of-panel insulator, flat washer and two hex nuts. Maximum rating is 30 amperes at 1000 volts working.

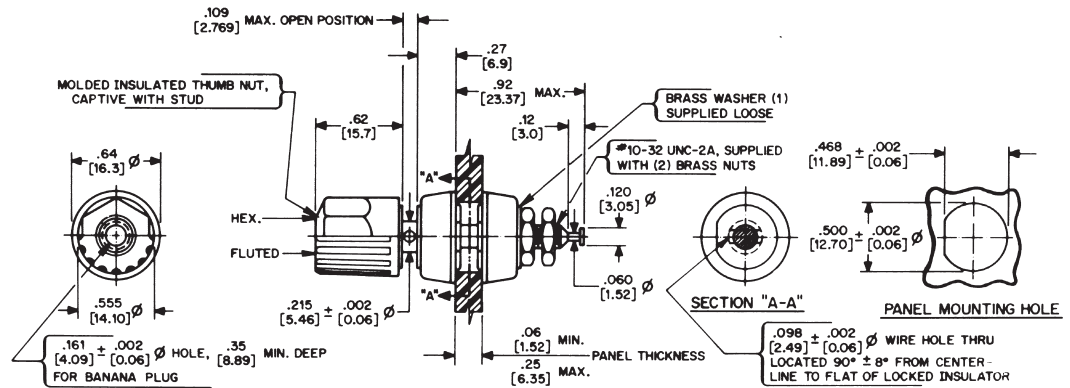


FIGURE 1
DIMENSIONS - BP30, BP30-10 HEX NUT AND BP31, BP31-10 FLUTED NUT SERIES
 (Note: BP30 and BP31 Series have #8-32 thread instead of #10-32 thread shown.)

Miniature Single Assembly, BP21 Series Fluted Nut (including Custom Color Ring) Types.

Supplied with captive thumbnut and fixed front panel button assembled to the stud. The loose back-of-panel insulator is supplied separately. See Figure 2 for mounting hole dimensions (keyed hole required for positive orientation).

To mount, insert the stud in the hole, orient as required and assemble the back-of-panel insulator, flat washer and two hex nuts. Maximum rating is 15 amperes at 1000 volts working.

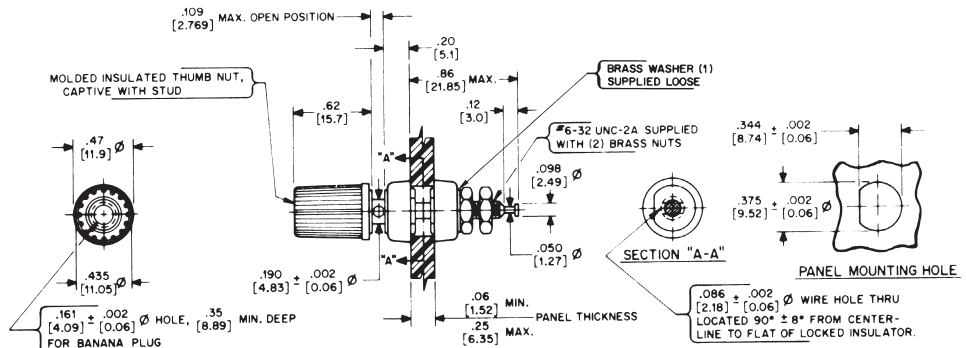


FIGURE 2
DIMENSIONS - BP21 SERIES MINIATURE FLUTED NUT TYPES

Single Assembly, All Metal Grounding Type BP30GP10.

Supplied with captive thumbnut and fixed front panel button assembled to the stud. The loose mounting hardware is supplied separately. See Figure 3 for mounting hole dimensions (keyed hole required for positive orientation).

To mount, insert the stud in the hole, orient as required and assemble the two flat washers and the two hex nuts. Maximum rating is 30 amperes at 1000 volts working.

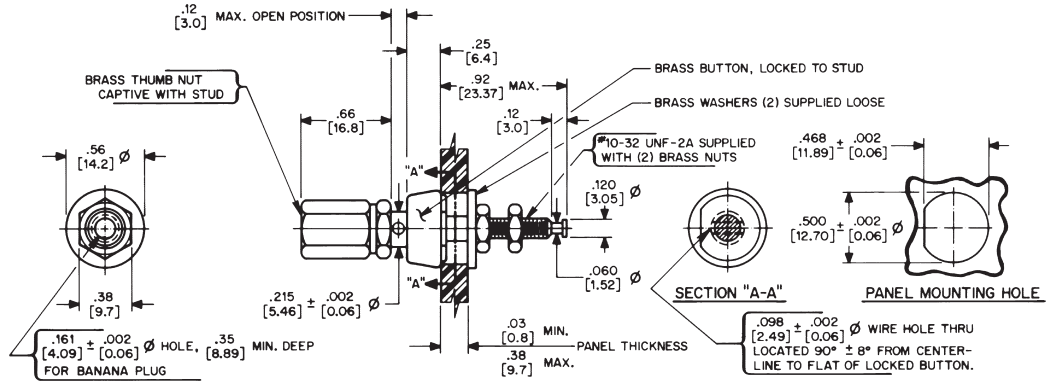


FIGURE 3
DIMENSIONS - ALL METAL GROUNDING TYPE BP30GP10

Standard and Larger Stud Size, Double Assembly BP30 and BP30-10 Series Hex Nut; and BP31 and BP31-10 Series Fluted Nut (including Custom Color Ring) Types.

Supplied with captive thumbnuts and fixed front panel insulator assembled to the studs. The loose back-of-panel insulator and the mounting hardware are supplied separately. See Figure 4 for mounting hole dimensions.

To mount, insert the studs in the holes and assemble the back-of-panel insulator, the two flat washers and the four hex nuts. Maximum rating is 30 amperes at 1000 volts working.

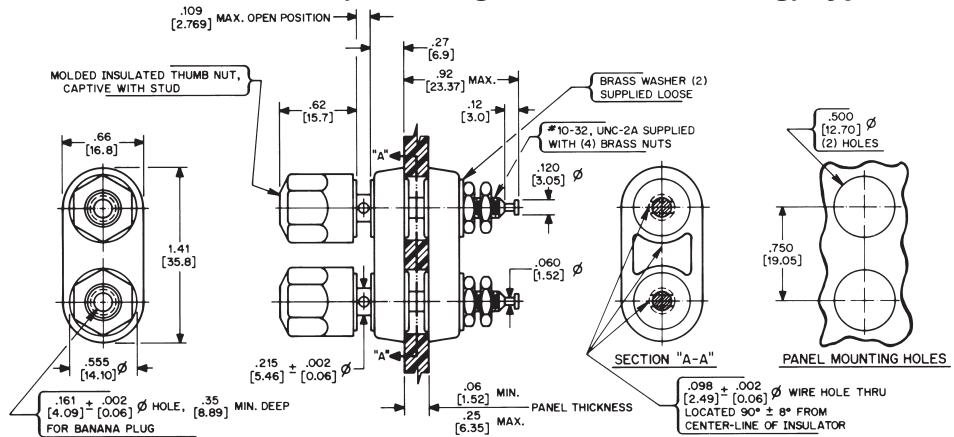


FIGURE 4
DIMENSIONS - STANDARD SIZE DOUBLE ASSEMBLY TYPES
(Note: BP30 and BP31 Series have #8-32 thread instead of #10-32 thread shown.)

Miniature Double Assembly, BP21 Series Fluted Nut (including Custom Color Ring) Types.

Supplied with captive thumbnuts and fixed front panel insulator assembled to the studs. The loose back-of-panel insulator and the mounting hardware are supplied separately. See Figure 5 for mounting hole dimensions.

To mount, insert the studs in the holes and assemble the back-of-panel insulator, the two washers and the four hex nuts. Maximum rating is 15 amperes at 1000 volts working.

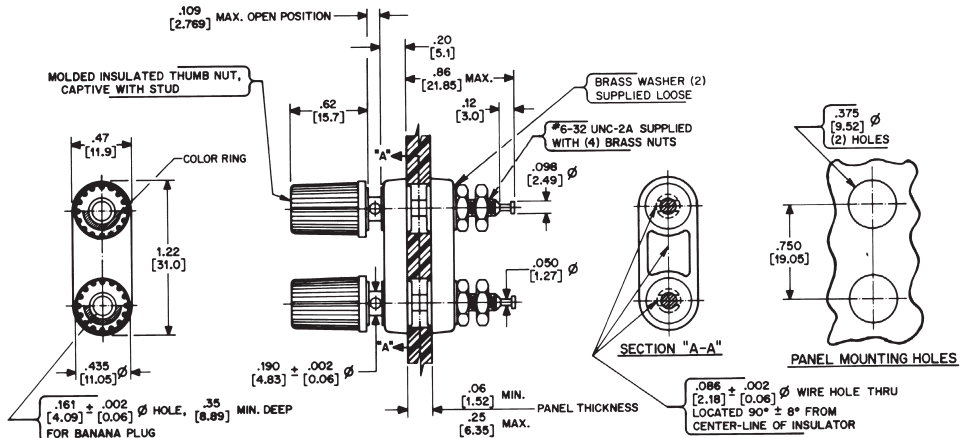


FIGURE 5
DIMENSIONS - MINIATURE DOUBLE ASSEMBLY TYPES

These products are sold subject to the standard Limitation of Liability and/or Warranty of Superior Electric. Because continuous efforts are made to improve the quality and performance of our products, delivered products may differ from descriptions in this instruction.



28 SPRING LANE • SUITE 3
FARMINGTON, CT 06032 USA
www.superiorelectric.com
info@superiorelectric.com

Telephone and Fax Numbers
Telephone 860-507-2025
Fax 860-507-2050
Customer Service 860-507-2025, Ext. 70782
Product Application 860-507-2025, Ext. 72058

Toll-Free (in USA and Canada only)
Telephone 1-800-787-3532
Fax 1-800-821-1369
Customer Service 1-800-787-3532, Ext. 70782
Product Application 1-800-787-3532, Ext. 72058



Manufactured Under an ISO9001 Compliant Quality Management System